



Detcon Model AV1-C1D2C

ISO 9001: 2000
Certified

888-367-4286
281-367-4100
fax 281-292-2860

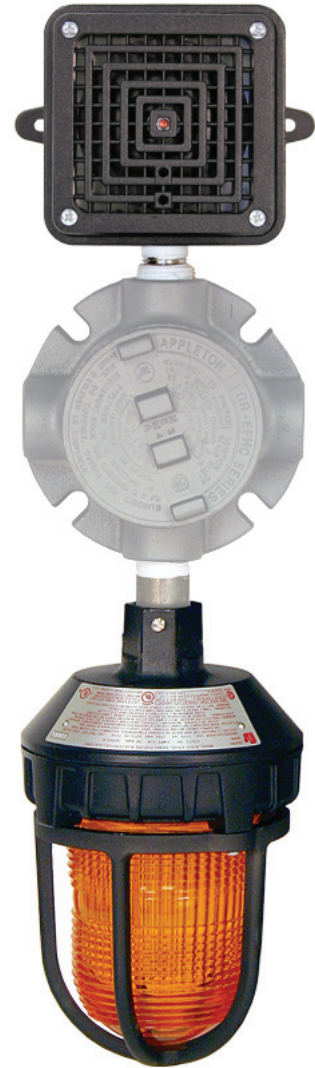
www.detcon.com
sales@detcon.com

Hazardous Duty Alarm Station Class 1, Division 2 Continuous Tone

Description

Detcon Model AV1-C1D2C audio visual alarm stations are designed for installation and use in heavy industrial environments. The alarm station consists of a warning light and a siren. The warning light can consist of any dome color such as amber, blue, clear, green, red, or magenta. The audible alarm is capable of producing coded blasts or sustained tones. Model AV1-C1D2C alarm assemblies are specifically designed for hazardous locations or corrosive environments where a very bright visual and high decibel alarm signal is required. The high-intensity strobe light provides 80 flashes per minute. The siren produces a noise level of 100dbA @ 10 feet. The light is UL listed and CSA Certified for Class I, Division 2, Groups A, B, C and D; Class II, Division I, Groups E, F, and G; and Class III. The siren is UL listed and CSA Certified for Class I, Division 2, Groups A, B, C and D; Class II, Division 2, Groups F, and G.

Model AV1-C1D2C alarm components are pre-assembled and mounted on a four-way junction box with 3/4" NPT ports. The assemblies are NEMA 4X rain tight and suitable for installation in harsh locations. Overall dimensions are 21"H x 6"W x 10"D.



Ordering Information

977-1L 000-0F

Color of Strobe

2 - Red 6 - Blue
4 - Amber 7 - Magenta
5 - Green 9 - Clear

Voltage

3 - 120 VAC
4 - 240 VAC

Light Specifications

Voltage: 120VAC 50/60HZ, 240VAC 50/60HZ
Mount: 3/4" Pipe
Operating Current:
0.32 Amps at 120VAC, 0.16 Amps at 240VAC
Dome Colors: Amber, Blue, Clear, Green, Magenta, Red
Dome Guard: Included
Operating Temperature Minimum: -31°F to 150F
Light Source/Lamp Style: Strobe Tube
Lamp Life: 10,000 Hours
Flash Rate/Minute: 80
Candle Power Peak: 520,000
Effective Candle Power: 165
Enclosure Rating: Type 4X
Ingress Protection: IP66
Dimensions: 8.75"H x 5.5" Diameter
Warranty: 1 Year

Siren Specifications

Voltage: 120VAC 50/60HZ, 240VAC 50/60HZ
Mount: Surface / Panel
Operating Current:
0.18 Amps at 120VAC, 0.09 Amps at 240VAC
Temperature Rating: -65°F to +150°F
Sound Output: 100db @ 10feet, 110dB @ 1 meter
Duty Cycle: Not rated for continuous duty
Enclosure Rating: Type 4X
Height: 5.3 in.
Width: 5.3 in.
Depth: 3.66 in
Warranty: 1 Year

www.detcon.com